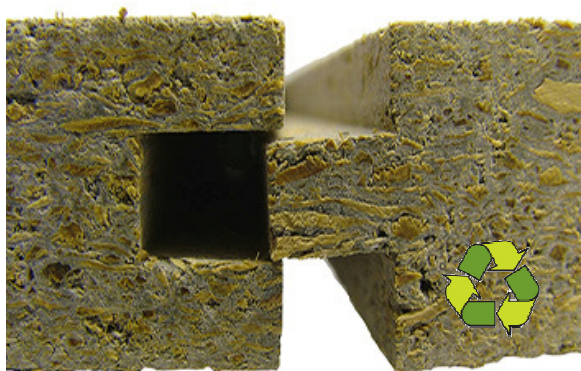


QUIETBOARD - A Waterproof, Cement Impregnated Acoustic Floor Board

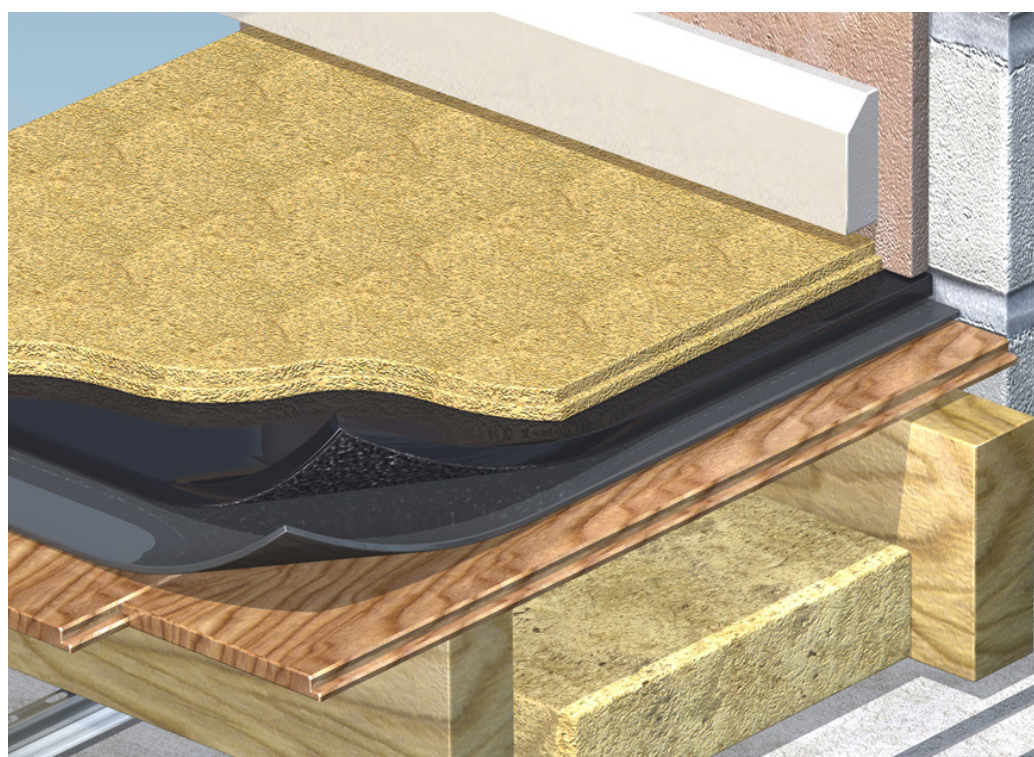


Key Benefits

- Will help meet PART E regulations when used with our other products.
- Made from 75% recycled wood pulp
- Exceptional sound control due to its ultra high mass
- Suitable for both concrete and timber floors.
- Easy to install tongue and grooved boards.
- Easily sawn with diamond or tungsten tipped blades.
- Non Flammable
- Supplied in slabs 1.2m x 0.6m x 19mm thick.
- Available from stock

Description

QuietBoard is a revolutionary, waterproof, cement impregnated high-density acoustic floor panel designed to reduce the airborne noise transfer through separating floors.



QuietBoard installed on top of our Acoustical R10 resilient insulation (As shown left) provides a very efficient and stable floating floor.

QuietBoard Acoustic Flooring is a much higher density product constructed from two well established building materials, wood particles and cement. It is quick to install and easily cut to size using either tungsten or diamond tipped saws.

QuietBoard is a very dense product, and both faces have a hard smooth flat surface. They are non-toxic, contain no flammable materials and generate no toxic fumes during combustion.

QuietBoard is usually delivered secured in plastic wrapped and edge protected pallets. When loose boards are transported they must be laid flat and fully protected with a waterproof sheet.

When manually moving QuietBoard, it must be carried in a vertical position. Storage - QuietBoard should be stored flat on levelled supports at 800mm centres. It must never be stored on edge or upright. If outside, a protective plastic sheet must be secured to protect the product from the elements.

QuietBoard has an ex-works moisture content of 9% \pm 3% and is in equilibrium when the temperature is 20°C with a relative air humidity of 50-60%. QuietBoard adapts to the ambient humidity level, therefore, to adjust to its working conditions it should be allowed to acclimatise for 24-48 hours prior to fixing.

ADDITIONAL INFORMATION AND INSTALLATION DETAIL CAN BE FOUND ON OUR WEBSITE