



## *What's in the Tube?*

PLEASE CHECK THAT ALL THE FOLLOWING IS INCLUDED IN THE TUBE  
**BEFORE** COMMENCING ANY WORK

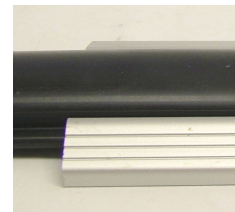
2 X Black Rubber Soundproofing Mats



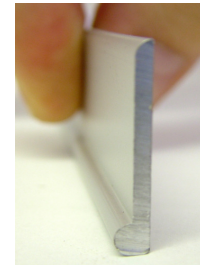
6 x 1 metre lengths of RP120 Seal (For the sides and top of the door)



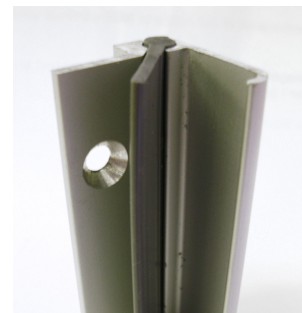
1 x 2 metre length of TES Threshold Seal and rubber insert



1 x 2 metre length of CDS Contact Strip



1 x 2 metre length of RP16si



1 x Can of Spray Adhesive

1 x Clear Bag of screws - 17 Large screws and 7 small screws.

1 x Set of Installation Instructions, containing 3 pages.



## Installation Guide for Seal Kit 2 / Double Door

Please read through this sheet before commencement of any work.  
Failure to install as detailed below may result in the products not performing as specified.



### DOOR

There needs to be a 17mm (1.7cm) gap between the bottom of the door and the floor. If you already have a gap this size please do not remove the door as instructed below. These instructions are for those doors that have an insufficient gap that requires adjustment.

### STAGE 1 — Attaching the Black Sound Insulating matting to the doors

Materials needed:

Sharp Scissors, Tape Measure, *Spray Adhesive — Supplied, Black Soundproofing Mats — Supplied*

- 1) Make sure the doors are clean, dry and smooth
- 2) Remove the door handles and any other ironmongery. Do not remove the hinges.
- 3) Remove the doors from the frame.
- 4) Measure the doors and cut the black mats to fit the doors exactly. This may entail cutting and joining the mat as necessary.
- 5) Remove the lid from the adhesive can. You will notice the nozzle is adjustable. This should be set to maximum spray pattern by turning nozzle clockwise to last setting marked on top of can. (See image right) The spray comes out in a cobweb effect. Spray the doors right to the edges making sure you apply a reasonable amount and the flow is regular and consistent all over.



- 6) Spray one side of the black mat in the same way as the doors.
- 7) Leave both the doors and the mat for 2 minutes. (This allows the adhesive to cure before sticking the mats to the Doors)
- 8) Stick the mats to the **Hinged side opening** of the doors, adhering from top to bottom. Only one attempt can be made as the adhesive bonds very quickly. (Make sure the mats are covering the doors completely.)
- 9) Leave the doors to one side as you will need them again at the end of the installation.

**IT IS VERY IMPORTANT YOU ONLY USE THE ADHESIVE SUPPLIED BECAUSE IF YOU USE ANOTHER GLUE TO BOND ANYTHING TO THE BLACK MATS IT MAY BREAK DOWN THE PVA COMPOSITION.**

## **STAGE 2 — Attaching the RP120 Door Perimeter Seal**

Materials needed:

Sharp Scissors, Tape Measure, *RP120 Seal — Supplied*

- 1) Make sure the door surround is clean, dry and smooth.
- 2) If there is a card insert in the seal please remove. Measure the door jam at either side and at the top to determine the length of seal needed. And then cut to the required lengths.
- 3) Install the vertical sections first. Remove approx 15 cm of the adhesive backing at a time and apply from top to bottom. Run your finger through the centre of the seal to ensure it has stuck well either side. (See Picture)
- 4) As the seal is supplied in metre lengths just butt joint the two pieces together where needed.



### **NOTES**

During the installation process be careful removing and repositioning the seal as this may affect the adhesive bond. If painting the door, make sure the paint has fully dried before closing onto the seal. Otherwise, sticking will occur that would damage the seals.

---

## **STAGE 3 — Attaching the Threshold Strip to the floor**

Materials needed:

Hacksaw, Tape Measure, Wood Plane, Screwdriver, *TES Threshold Seal — Supplied, Screws — Supplied*

- 1) Remove the rubber insert from the Threshold channel (See Picture, right)
- 2) Measure the width of the door frame, mark the Threshold seal then cut with the hacksaw to the desired length. Also trim the rubber insert to fit the threshold neatly if needed.
- 3) Please study the illustration in STAGE 6. Using the screws fix the threshold seal through the predrilled holes onto the floor. The centre of the seal must be in line with the outer edge of the door, as seen in the illustration in STAGE 6.
- 4) Pop in and pinch the rubber insert back into the threshold strip.
- 5) There needs to be a gap between the bottom of the doors and the floor of 17mm (1.7cm) You may need to plane the bottom of the doors to achieve this before re hanging.



## **STAGE 4 — Re-hanging the doors.**

- 1) The doors are now ready for your final finish. It is not essential to cover over the black mats with a finish but most customers prefer it aesthetically. You could use thin ply or a veneered panel.
  - 2) Spray the mat with adhesive and also spray the surface you are about to stick to it. Leave the two surfaces for 2 minutes before sticking them together. Only one attempt can be made to adhere your surface to the mat. Finally screw or nail through into the door to finalise fixing.  
**Make sure you only use the adhesive supplied to bond the panel to the black mat.**
  - 3) Re hang the doors and check they sit comfortably on all the seals and they open and close properly. Adjust if necessary.
  - 4) Refit any ironmongery and door handles, screwing through the mat into the wood behind.
-

### **STAGE 5 — Attaching the separating door seal - RP16si**

Materials needed:

Hacksaw, Tape Measure, Screwdriver,  
*RP16si Seal — Supplied, Screws — Supplied*

- 1) Decide which door you wish to attach the seal to.  
**The seal must be placed internally.**
- 2) Using the screws provided, fix the strip through the predrilled holes to the door. (You are attaching this seal to the closing edge of the door. Where the two doors meet.)
- 3) The doors should now close together and the rubber insert should close to form a tight seal.



---

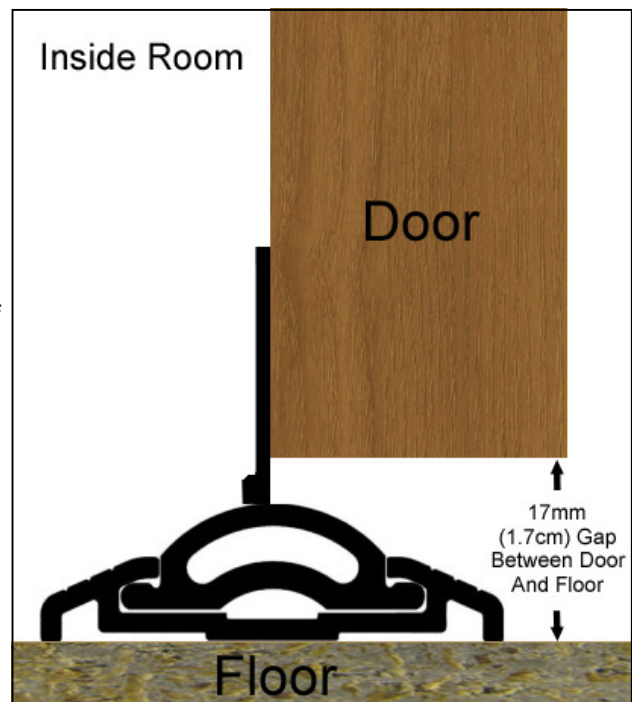
### **STAGE 6 — Attaching the Contact Strip to the doors**

Materials needed:

Hacksaw, Tape Measure, Screwdriver,  
*CDS Contact Strip — Supplied, Screws — Supplied*

- 1) Measure the width of the doors and mark the contact strip then cut with the hacksaw to the desired lengths.
- 2) Using the screws provided, fix the contact strip through the predrilled holes to the inside edge of the doors. (The opening side of the door) Make sure the ridged edge of the seal is at the bottom and facing away from the door. (See diagram right)

THE DOORS SHOULD NOW OPEN AND CLOSE PROVIDING A GOOD ACOUSTIC SEAL AT THE BOTTOM, TOP AND SIDES OF THE DOORS.



FURTHER REDUCTION CAN BE OBTAINED BY ADHERING ANOTHER LAYER OF MAT TO THE OTHERSIDE OF THE DOORS, HOWEVER THE WEIGHT OF THIS PRODUCT MAY MEAN THE DOORS DO NOT HANG AS WELL AS BEFORE AND MAY REQUIRE ADDITIONAL HINDGES.

Check our website to see our full range of seal kits

[www.soundservice.co.uk](http://www.soundservice.co.uk)

**Tel: 0845 363 7131**