

SBM5 SOUNDPROOFING MAT - Barrier mat for use on walls and floors

Key Benefits

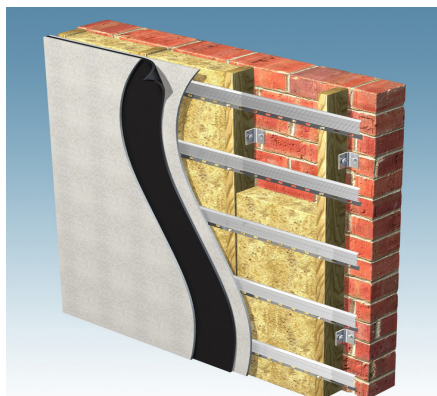
- Ideal for use as a de-coupler between plasterboard
- Blocks airborne sound as well as a sheet of lead
- Significantly increases the mass of any panel or board
- Easy to cut and install
- Minimum insulation value of 24db
- Supplied on a roll 1.8m x 1.2m x 2mm thick
- Available from stock

Description

A thin, effective, mineral loaded soundproofing mat designed to reduce airborne noise transmission through stud partitions and timber joisted floors.

SBM5 is a heavy layer mineral loaded soundproofing mat nominally 2mm thick with excellent sound insulating qualities which will give significant sound loss improvements to lightweight structures when used as a sound barrier layer.

It is equal to lead of the same mass in effectiveness and acts as a thin de-coupling sound barrier in stud walls and timber floors. If you are suffering from a small amount of noise, several layers of SBM5 installed onto your floor will be the solution. Also effective at reducing loud and bass noise when used as a decoupling layer between plasterboard as part of a separating wall soundproofing treatment as described below.



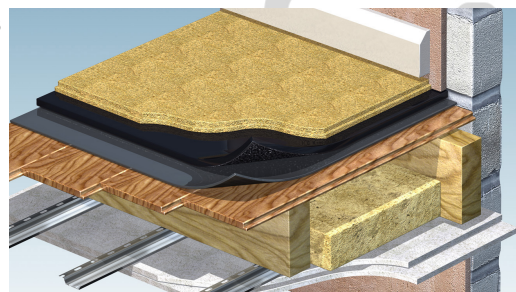
If you are experiencing loud noise such as music from the other side of a wall, we recommend using the soundproofing mats with our resilient bars and Acoustic Plasterboard. The soundproofing mat is sandwiched between two layers of the plasterboard which in turn are screwed into the bars which are supported by insulated timber stud. See our Resilient Bar information for more details.

Alternatively you can stick them directly to a wall before adding further plasterboard. This will help reduce the sound but ideally you would use one of the systems above for a better result or our M20AD system.

Normally fixed to original panels of metal, wood and plasterboard etc, this acoustic mat is particularly effective at improving the sound insulation value of timber floors and stud partitions.

Use on Floors

Two to three layers glued onto timber floors will dramatically reduce airborne noise penetrating the floor from below or airborne noise you are creating being transmitted from above. But does **not** significantly reduce any footfall or impact noise.



Special Spray Adhesive

For ease of bonding, we advise using our Sta-Put special aerosol adhesive when fixing these soundproofing mats. Please ask about quantities needed when ordering.

ADDITIONAL INFORMATION AND INSTALLATION DETAIL CAN BE FOUND ON OUR WEBSITE

Sound Service (Oxford) Ltd, Crawley Mill, Witney, OX29 9TJ
www.soundservice.co.uk

Tel: 0845 363 7131 - Fax: 0845 363 7151